

Aqua Marketing

Reporting Software
for the Irrigation Industry

“I’m excited to see what Aqua can do for my company’s water usage. Implementing this software will save my company thousands of dollars and eliminate penalties.”

- Local Water Manager

Aqua Reporting Software works with your existing central control software system to analyze and monitor operations. Aqua is an essential tool for central control systems used by municipalities, school districts, universities, park and recreation departments, housing communities, cemeteries, sports fields, resorts and hotels.

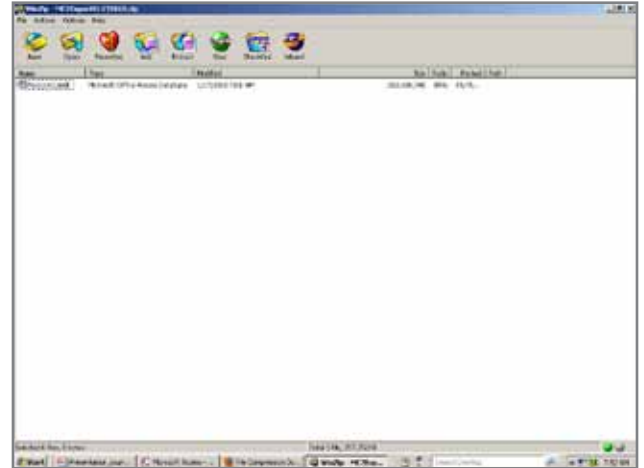
By leveraging the information in your existing central control software system you will now have analysis & reporting tools. With Aqua, your operators can concentrate on other tasks while your central control system provides the analysis & monitoring.

Key Benefits & Capabilities:

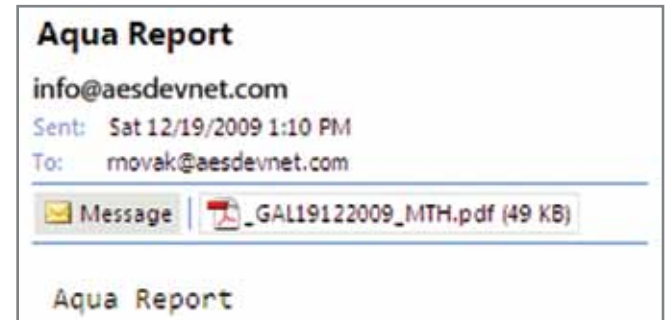
- Create meaningful reports which will allow you to balance the allotted water vs. current usage
- Receive an email or text message for Alarms via the Aqua-Alarm feature
- Allows detailed analysis of the central control system

Aqua-Alarm’s event-notification feature provides a link to your existing central control software system. This gives you the capability to automatically notify personnel of problem conditions. Alarms can be sent to an email, cell phone or pager saving valuable time and money. This requires an Internet connection.

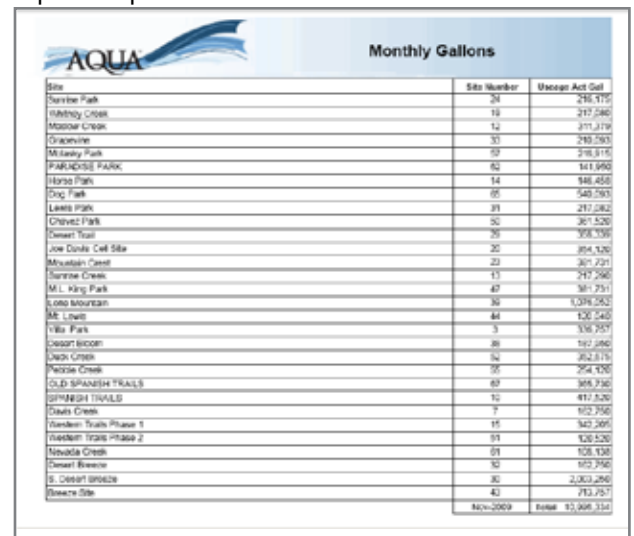
Exporting your database:



Aqua-Alarm email or phone message:



Report example:



Site	Site Number	Usage Act Gall
Santer Park	21	236,315
Whitby Creek	19	217,580
Mossy Creek	12	211,219
Chaparral	33	208,293
Meadow Park	18	216,315
PARKSIDE PARK	62	141,690
Harris Park	14	146,456
Eric Park	05	140,293
Lewis Park	31	217,682
Chavez Park	32	367,520
Desert Trail	26	306,339
Joe Davis Cell Site	28	316,240
Mountain Crest	22	307,221
Sunrise Creek	13	247,260
M.L. King Park	47	367,251
El Oro Mountain	36	1,036,262
Mc Linn	44	120,240
Twin Park	7	167,307
Desert Breeze	38	117,260
Each Creek	62	262,217
Peoria Creek	01	264,220
OLD SPANISH TRAILS	67	366,230
SPRINGH TRAILS	10	417,220
Orain Creek	7	162,250
Tandem Trails Phase 1	11	167,260
Tandem Trails Phase 2	09	120,220
Nevada Creek	01	108,230
Desert Breeze	32	107,260
S. DESERT BREEZE	30	2,002,260
Emery Site	42	213,257
Nov-2009		Total 43,268,234

AESDevNet

950 N. Tustin Ave,
Suite 100
Anaheim, CA 92807
Phone: (949) 842-4194
Fax: (714) 783-7411
Email: info@aesdevnet.com